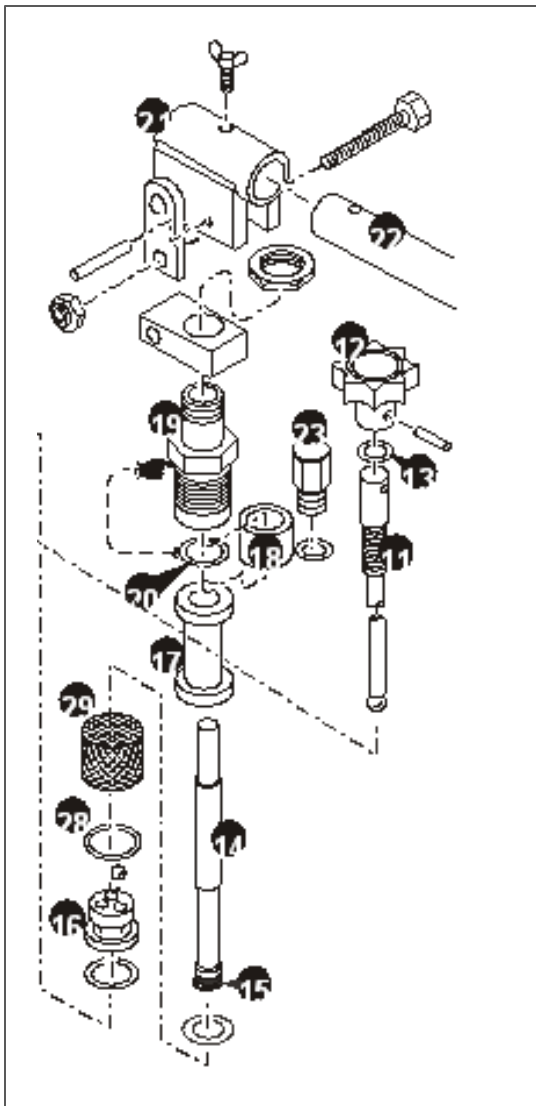




Model JP **15** [P15] and JP **25** [P25]  
Not valid for JP16 and JP26



#	Part Name
11+12+13	Lowering screw
14+15	Pressure piston including 15 cup-type seal
16	Valve 520 bar including 28 O-ring and 29 sieve
17	Pressure cylinder assembly
18	Intermediate ring
19	Pressure screw including 20 O-ring
21	Pump rod assy.
22	Pump lever
23	Breather screw
nn	special hexagonal nut for pressure screw assy.
	Seal Kit

**We are here to help. Call us to troubleshoot.**

**To order parts please provide:**

- Pump model number.  
(**JP 15, JP 25**)
- Due to a design change, we also require the serial number or year built to match up some of the parts.
- Part #.