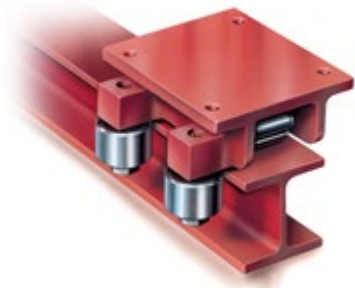


BÖRKEY ROLLER

Guiding Caster Add-on Options



Working load limit of guiding casters

Model size	Admissible Radial Force per Guide Roller (Tons)	Admissible Radial Force per Guide Roller (KN)
# 1, 2, 3, 3v	1	10
# 4, 5, 5L	10	100
# 5v, 6	15	150

Guiding side casters for use on tracks such as crane rails or steel beams for repeat journeys

- ▶ If parallelism of rails is uncertain, outfit rollers on one rail with guiding casters only, and use 4 casters per roller.
- ▶ If parallelism of rails is assured, rollers can be outfitted with just two casters on each roller on both rails.
- ▶ Maximum speed: 16ft/min (5 m/min)

HOW TO ORDER:

1. Choose Caster Configuration



Add-on Option:

A

B

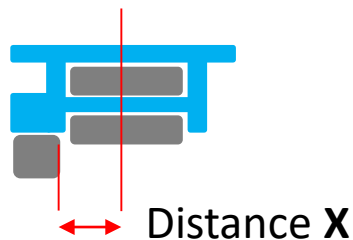
C

D

E

2. Choose Caster Offset

Provide distance X: _____



Distance from the center of the roller to the side of the guiding caster