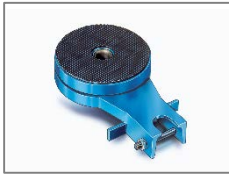


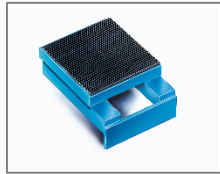
To order, please provide: Roller model number, serial number or year built, and part #. If unknown, call us for help.



1 Frame



2 Swivel Top



3 Rigid Top



4 Handle



5 Complete chain



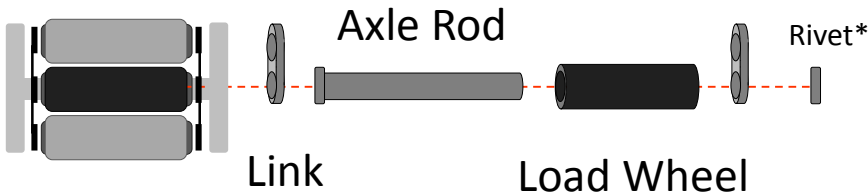
6 Axle rod with clip ring



7 Link



8 Load wheel



* The rivet is not a separate component. The axle rod is punched to create a crush-rivet. An axle rod with a clip-ring is used in the field to repair any damage.

#	Part name
1a	Frame
1b	Frame - Galvanized
1c	Frame - with Marine Coating
2a	Swivel top – Padded – Size #1-3
2b	Swivel top – Padded – Size #4-5
3a	Rigid top – Padded – Size #1-3
3b	Rigid top – Padded – Size #4-5
4	Handle
5a	Complete chain - steel
5b	Complete chain – galvanized axle & links
5c	Complete chain – stainless steel axle & links
6a	Axle Rod – steel - with circlip
6b	Axle Rod – galvanized - with circlip
6c	Axle Rod - stainless steel - with circlip
7a	Link - steel
7b	Link - galvanized
7c	Link - stainless steel
8a	Load Wheel - blackened steel
8b	Load Wheel - galvanized