

MACHINE SKATES

Advanced high-strength steel skate with non floor damaging wheels

Load Capacity:

**60 tons each -or-
120 tons combined**



Model A60

Steerable Front



Model B60

Adjustable-Width Rear

Example of Load Distribution

120 tons total

60 tons

30 tons

30 tons

60 tons

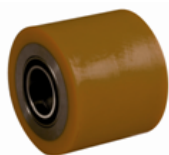
3-point skate systems do not slip during pulling & tugging actions

» Each Model Sold Separately
Mix & Match as Needed! «

Included	One steerable skate with non floor marking wheels and pulling handle.	One straight-line 2-part skate with non floor marking wheels and connecting bar.
Load Capacity Each	60 tons • 120,000 lbs	60 tons • 120,000 lbs
Load Capacity Combined A60 + B60	120 tons • 240,000 lbs	
Height (from floor to top of load pad)	9.1"	9.1"
Dimensions (Width x Length)	55" x 26" without handle	22" x 29" each skate part without bars
Load Wheel Dimensions (Ø x Width)	7.9" x 6.7" and 7.9" x 3.3"	7.9" x 6.7" and 7.9" x 3.3"
Supporting Surface (each with anti-slip load pad)	Ø 9.8"	15.6" x 10"
Length of Connecting Bar	n/a	60.7"
Pulling Handle length (with towing eye)	62.6"	n/a
Weight	992 lbs	904 lbs
Manufacturer • MPN	JUNG • JLB 60 H	JUNG • JFB 60 H

Free lifetime rigging & technical support hotline!

**JUWathan+®
Wheels**



with Steel Core

Patented wheel material is baked in oven over long period for elasticity and extreme toughness!

Non floor damaging	For smooth and rough floors	Overcomes small obstacles easily by molding around them to keep rolling.	Low floor pressure	Shock absorbent	Superior performance and durability over traditional polyurethane, composite or steel wheels
Non floor marking	For floors with cracks and dirt	No stop, up & over action required like with other wheels.	Low break out & low rolling resistance	Reliable under toughest working conditions	
	For both inside and outside use		Low push-pull force and low manpower requirements		



MADE IN GERMANY

By JUNG



5 Year Manufacturer's Warranty

(damage due to overloading not covered)