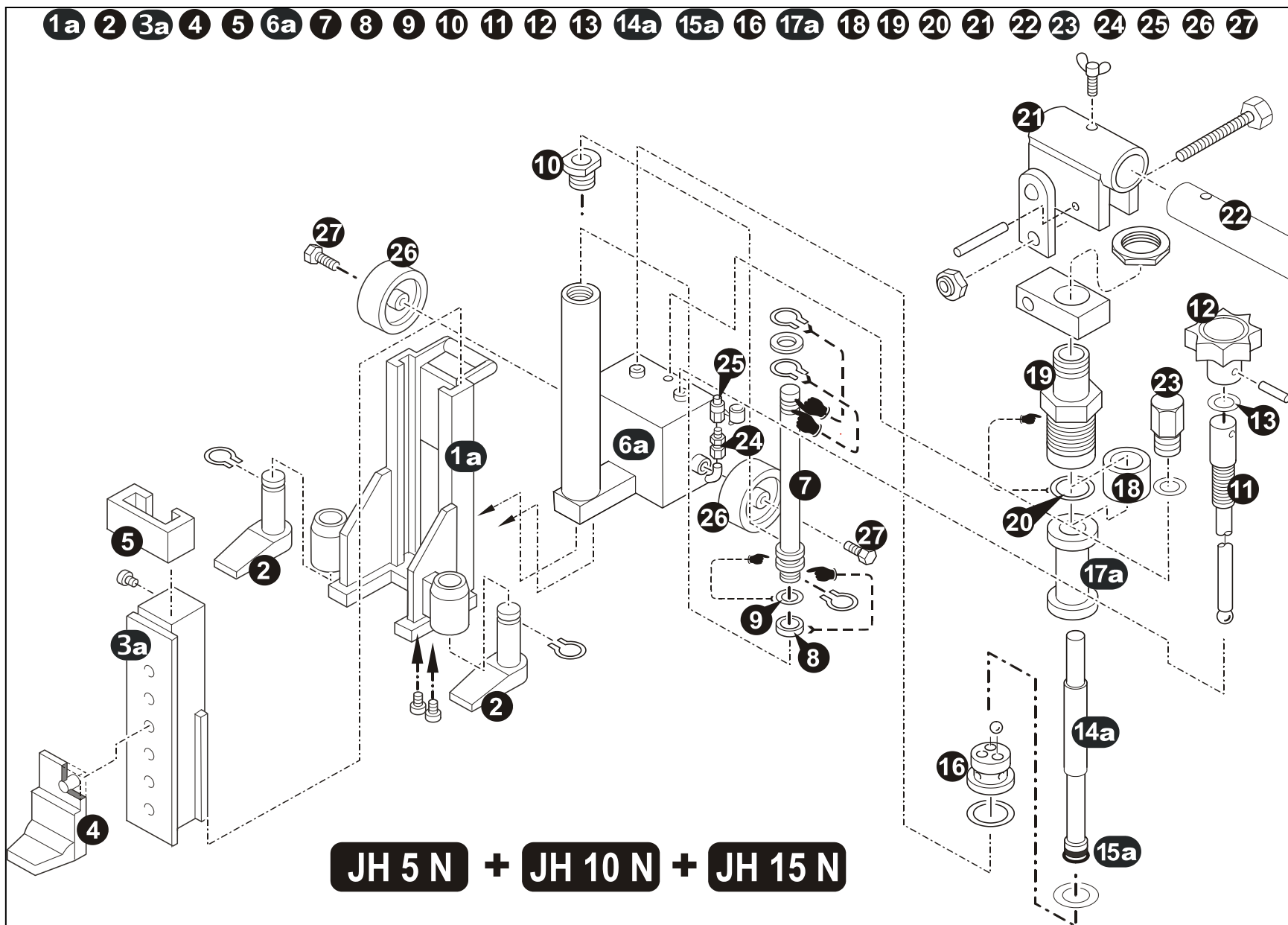


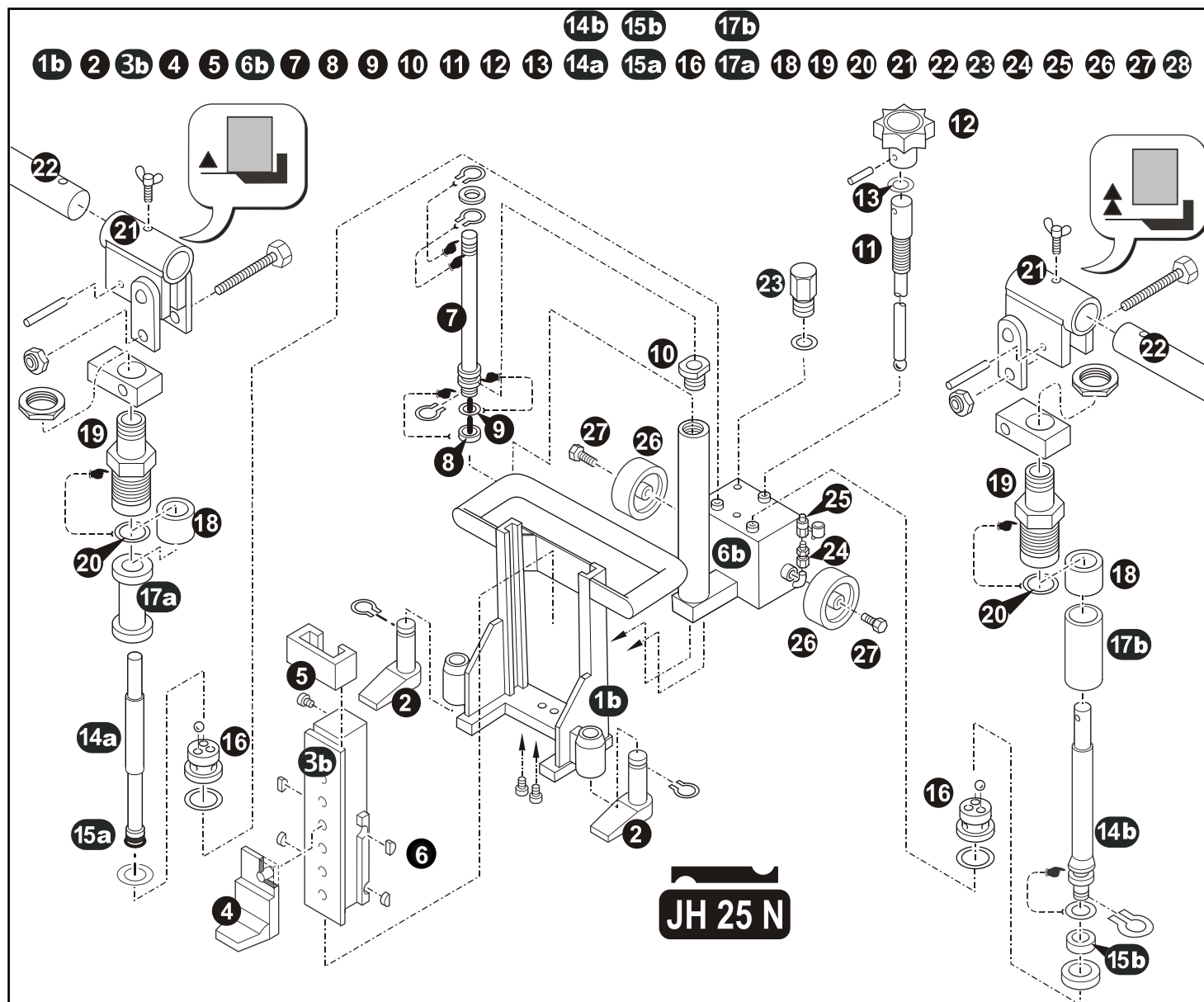


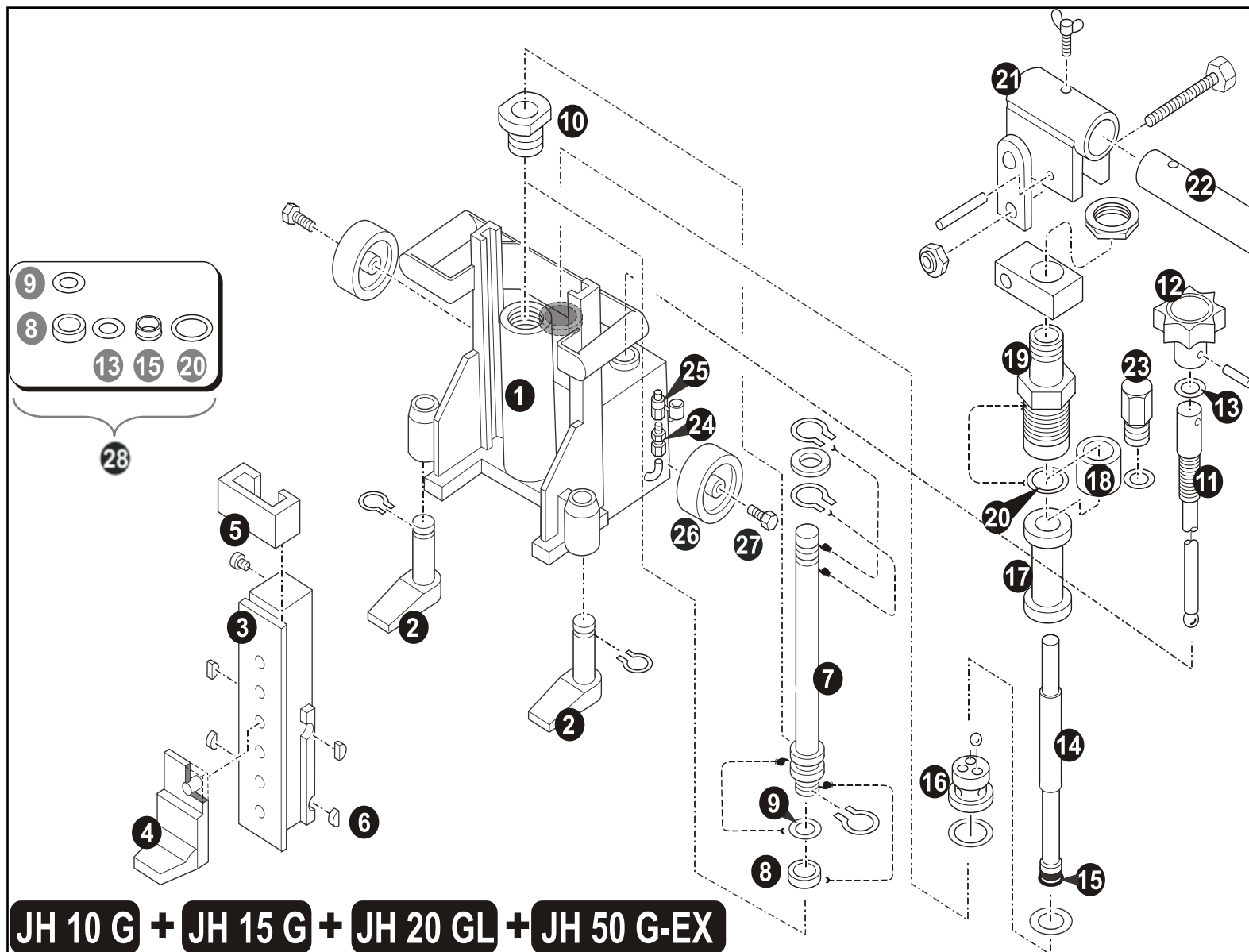
Spare parts list
A-N-G Series hydraulic toe jacks

Toolwell™

Tel: (800) 786-6112
CustomerService@Toolwell.com









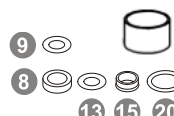

Spare parts list A-N-G Series hydraulic toe jacks

Toolwell™

Tel: (800) 786-6112
CustomerService@Toolwell.com

| # | Part name |
|------------------|---|
| 1, 1a, 1b | Housing without feet |
| 2 | Swivel foot with circlip |
| 3 | Slide assembly |
| 4 | Swiveling toe |
| 5 | Bracket (for toe) |
| 6 | Slide shoe |
| 6a, 6b | Tank |
| 7+8+9 | Lifting piston complete |
| 10 | Guiding Nut |
| 11+12+13 | Lowering screw with rubber seal (Attention: Replacement looks different. Design was improved) |
| 14+15 14a+15a | <u>For Slow Lift:</u> Pressure piston with suction cup |
| 14b+15b | <u>For Fast Lift:</u> Pressure piston with seals (on 15 and 20 G-plus only) |
| 16 | Overload protection valve |

| # | Part name |
|-----------|--|
| 17 17a | <u>For Slow Lift:</u> Pressure cylinder |
| 17b | <u>For Fast Lift:</u> Pressure cylinder |
| 18 | Spacer ring |
| 19+20 | Pressure screw and ring |
| 21 | Pump rod assembly |
| 22 | Pumping handle |
| 23 | Breather valve (Attention: Replacement looks different. Design was improved) |
| 24 | Connection screw |
| 25 | Nipple |
| 26+27 | Wheel with bolt |

| # | Part name |
|----|--|
| 50 | Seal Kit  |
| 51 | Oil 1 Liter (~1 quart)  |

We are here to help. Call us to troubleshoot.

To order parts please provide:

Jack model number.

(JH 4 A, JH 5 N, JH 10 A/N, JH 15 N, JH 25 A/N JH 10 G, JH 15 G, JH 20 GL)

Attention: Please refer to different parts list for G-plus series jacks.

- Part #.

We may also require the serial number or year built to match up some of the parts if there was a design change.