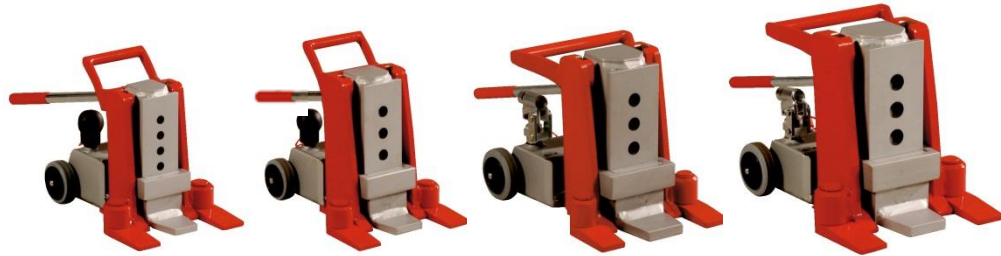
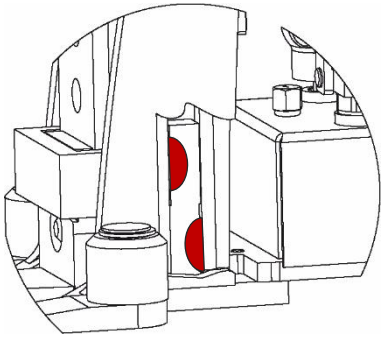


## HYDRAULIC TOE JACKS

Advanced functionality and precise control over lifting & lowering loads



**What makes the difference?**  
Patented slide shoe design stabilizes forward leaning

**5 G-plus**

5 tons

**10 G-plus**

10 tons

**15 G-plus**

15 tons

**20 G-plus**

20 tons

Lift Capacity	5 tons 10,000 lbs	10 tons 20,000 lbs	15 tons 30,000 lbs	20 tons 40,000 lbs
Number of Adjustable Toe Starting Positions	6	5	5	5
Toe Height (at lowest starting position)	0.5"	0.6"	0.8"	0.8"
Toe Height (at highest starting position)	6.2"	7.1"	8.1"	8.8"
Stroke (maximum lift from starting position)	5.5"	5.9"	6.9"	7.5"
Toe Depth (usable)	2.0"	2.2"	2.6"	2.6"
External Dimensions H x L x W (retracted with feet pointing forward)	11 x 12.8 x 9.2"	12.2 x 13.6 x 9.7"	12.2 x 15.8 x 11.8"	13.4 x 16.7 x 12.7"
Weight (ready for use)	51 lbs	64 lbs	106 lbs	132 lbs
Manufacturer • MPN	JUNG • JH6G+	JUNG • JH10G+	JUNG • JH15G+	JUNG • JH20G+

- ▶ Extra **low toe height**.
- ▶ **Toe is adjustable** to various starting positions.
- ▶ Safe to operate with **precise lowering control** and **overload protection** valve.
- ▶ **Swivel feet** firmly support the jack to prevent tipping and slipping.
- ▶ Pumping handle can be locked upright to tip back the jack onto **rollers for easy transport**.
- ▶ **Quick connectors** allow synchronous multiple jack operation with a **central pump**.
- ▶ **Slide shoe** design counter balances torque on toe
- ▶ **Two-speed** pumping on 15 G-plus and 20 G-plus

Free lifetime rigging & technical support hotline!