

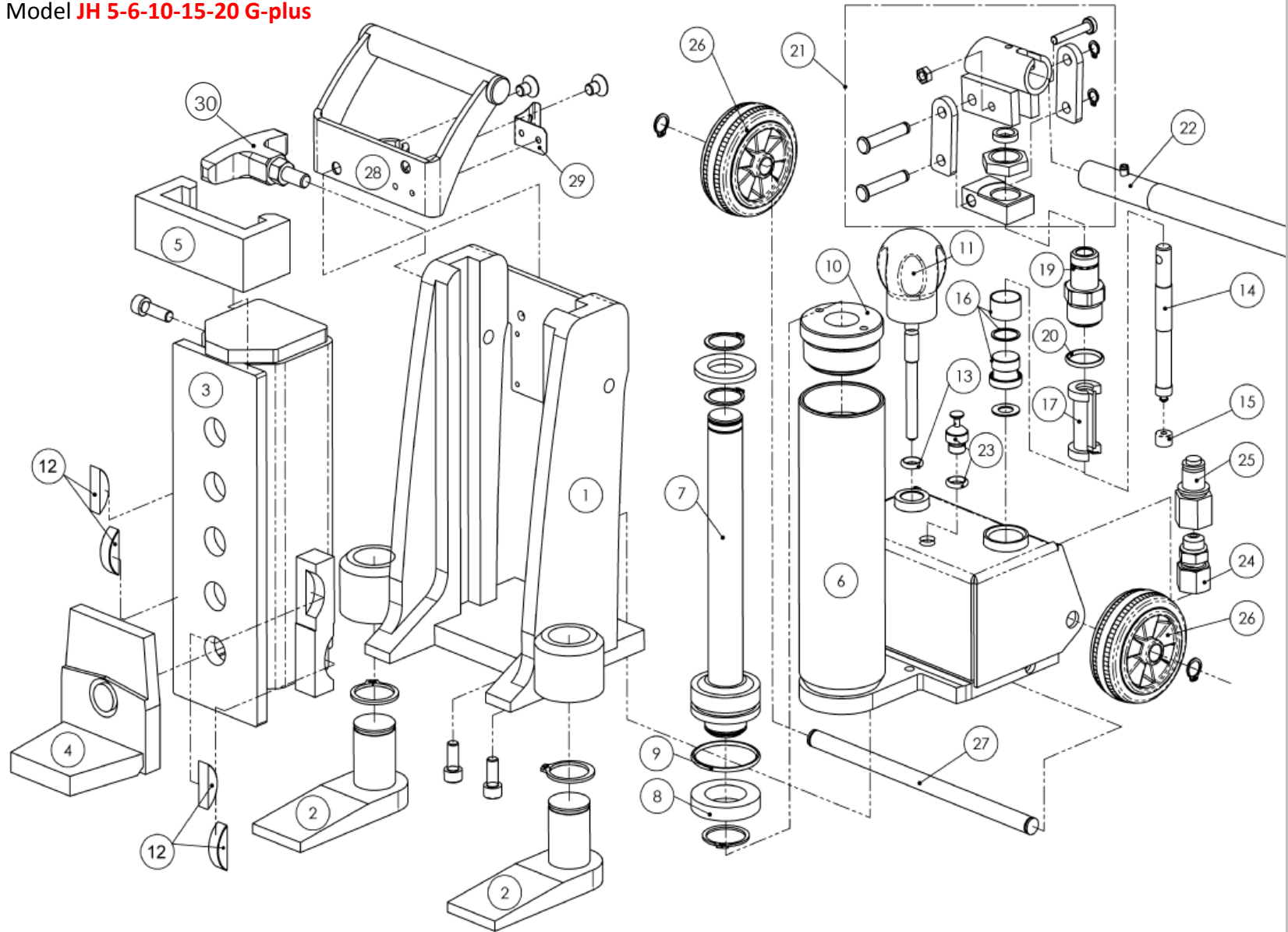


Spare parts list
G-plus Series hydraulic toe jacks

Toolwell™

Tel: (800) 786-6112
CustomerService@Toolwell.com

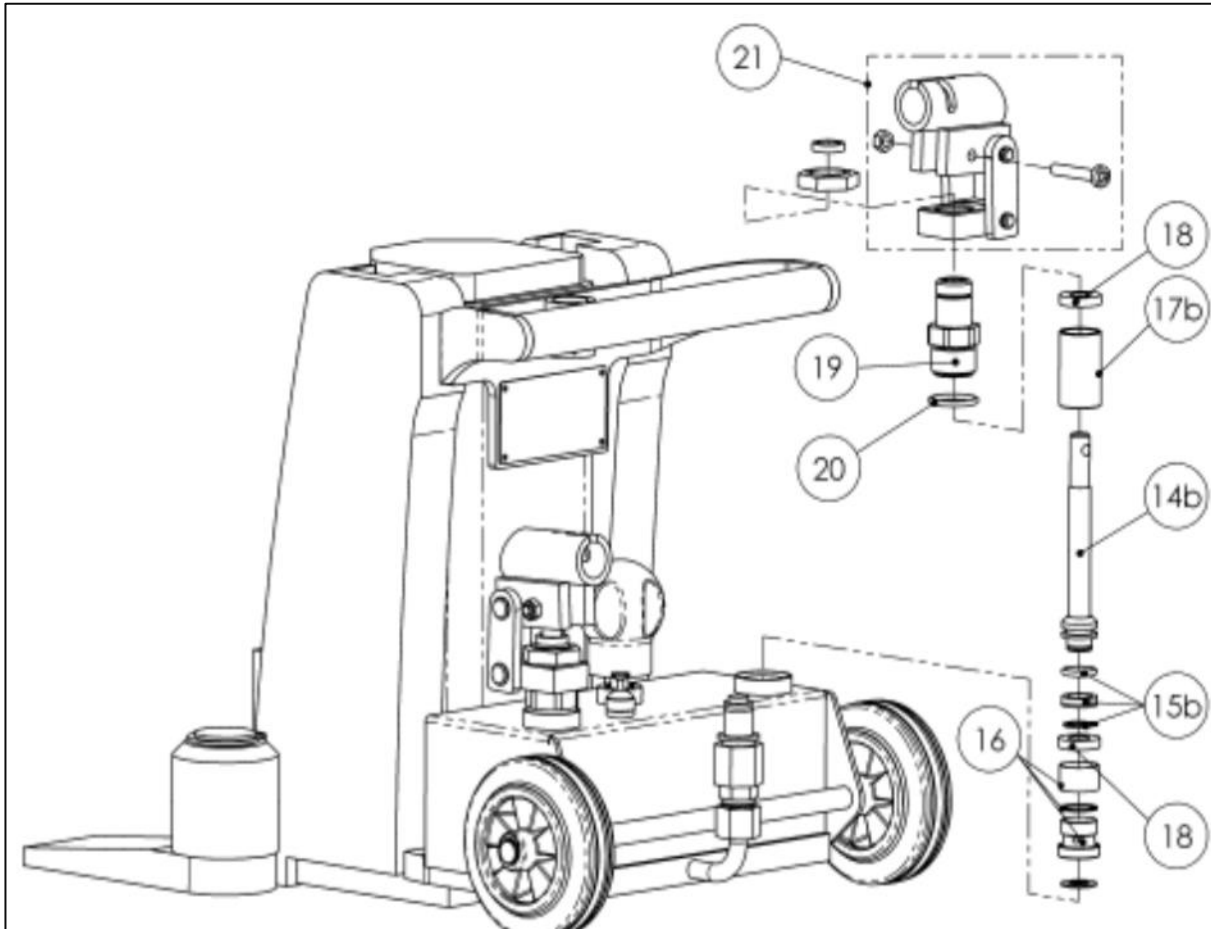
Model **JH 5-6-10-15-20 G-plus**





To order please provide: Dolly model number, serial number or year built, and part #. If unknown, call us for help.

Model **JH 15-20 G-plus**

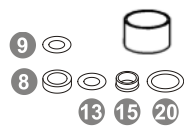



Fast lift
on 15 and 20 G-plus
models only



#	Part name
1	Housing without feet
2	Swivel foot with circlip
3	Slide assembly
4	Swiveling toe
5	Bracket (for toe)
6	Tank
7+8+9	Lifting piston complete
10	Guiding nut
11+13	Lowering screw with rubber seal
12	Slide shoe
14+15	<u>For Slow Lift:</u> Pressure piston with suction cup
14b+15b	<u>For Fast Lift:</u> Pressure piston with seals (on 15 and 20 G-plus only)
16	Overload protection valve

#	Part name
17	<u>For Slow Lift:</u> Pressure cylinder
17b	<u>For Fast Lift:</u> Pressure cylinder
18	Spacer ring
19+20	Pressure screw and ring
21	Pump rod assembly
22	Pumping handle
23	Breather valve
24	Connection screw
25	Nipple
26	Wheel with circlip
27	Axle with circlip
28+29	Handle with screws
30	Side handle (on 10G short only)

#	Part name
50	Seal Kit 
51	Oil 

We are here to help. Call us to troubleshoot.

To order parts please provide:

- Jack model number.
(JH 5-6-10-15-20 G-plus)
- Part #.

We may also require the serial number or year built to match up some of the parts if there was a design change.